

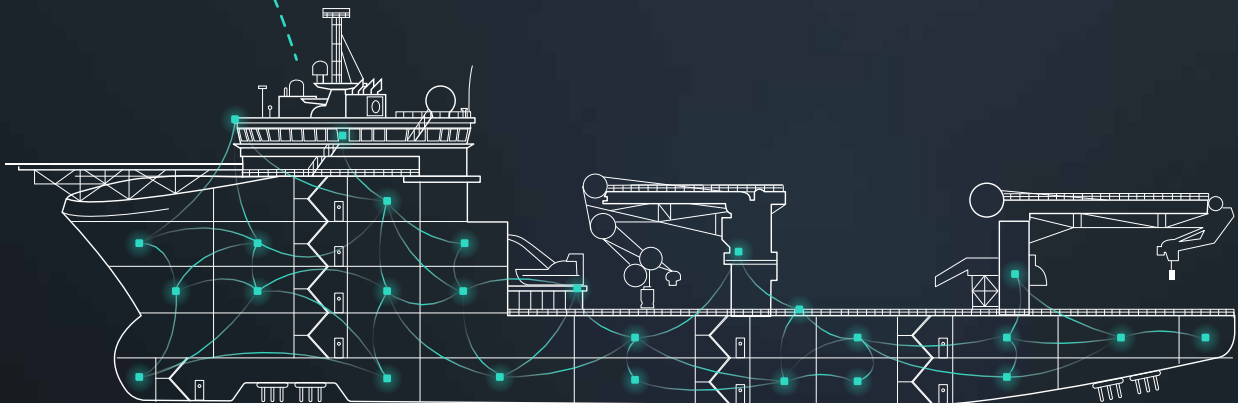
Monitor consumption. Enable real-time fuel reporting.

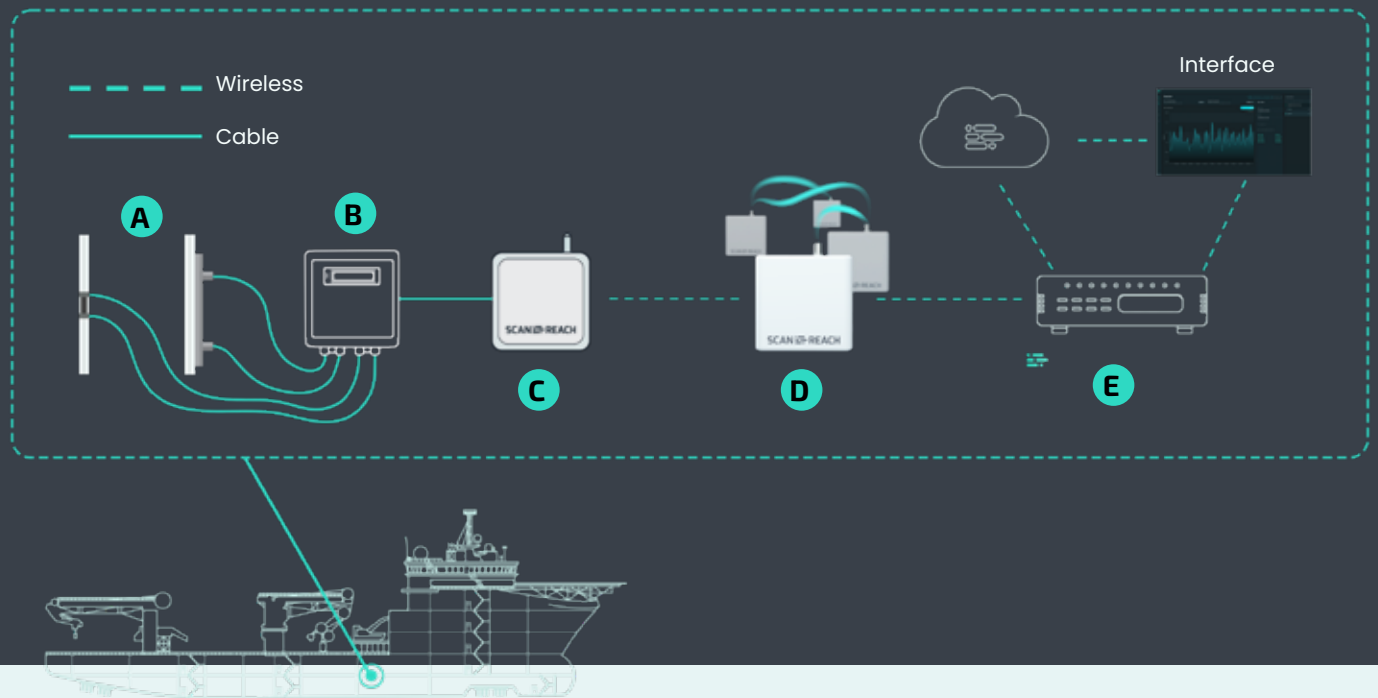


Realtime overview

Automated reporting

Secured cloud-based services





- A** In-line or clamp-on Flowmeter
- B** Transmitter Unit (Modbus)
- C** Fuel Node
- D** Mesh nodes
- E** ScanReach Gateway

“If you don’t know your real-time fuel consumption, it is difficult to reduce it!”

For most ships, fuel consumption data is only available after the fuel tanks have been sounded each day. ConnectFuel is the revolutionary on-board wireless connectivity solution, providing new ways to reduce fuel consumption, costs, and emissions at sea. End-to-end solution.

There is a belief in the industry that an instant awareness of fuel consumption can result in a fuel reduction. Install ConnectFuel as a tool to meet your reduction requirements.

Ultrasonic clamp-on fuel and inline flowmeters with Modbus are connected to our wireless mesh network. These provide real-time fuel consumption readings to vessel bridge and onshore fleet operation centre. Spend less. Earn more. A key component for full Onboard Wireless Connectivity (OWC) is the IoT mesh network that makes it easy to collect data, such as flowmeter readings from main and auxiliary engines onboard a vessel. These data are made available for presentation both at the vessel and ashore.

Explore the power of wireless connectivity to improve vessel performance and competitiveness.

It’s critical to find better ways to compete in markets with low margins and high competition. ScanReach OWC solution is DNV type approved and can be installed to any vessel in a matter of hours by the crew, avoiding expensive installation cost and complex cabling.